

Live Life Cleaner by Making Earth Greener



Delhi Public School, Hyderabad, India

Education is a key driver in enabling climate action. School campuses can play a tremendous role in enhancing understanding about climate impacts and ways to adapt among their students. Increasing temperature and its impact on human health and water availability are among the most directly felt climate impacts in urban areas. Planting native trees and increasing local biodiversity can play a significant role in enhancing urban resilience.

Delhi Public School is located at Nadergul in Hyderabad. Eco-clubs were formed by students under guidance from teachers to work on different environmental themes. Considering the role trees can play in controlling the local temperature and reducing urban heat island impacts, the school undertook a rigorous tree planting drive on campus and in the community. In 2016 when the school was established, there was just one tree on the campus. Today, 3,000 trees cover the campus grounds. The school has undertaken additional initiatives such as butterfly and pollinator garden, distribution of medicinal plants to students for planting at home and transforming a barren plot with plant cover to mitigate the impacts of rising temperature. In an interesting health-related initiative, a 'water bell' rung in-between classes reminds the children to drink water to keep themselves hydrated.

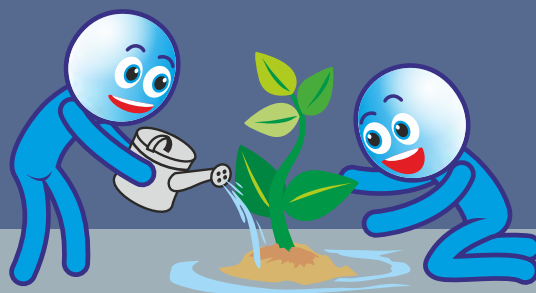
Other Eco-club activities at the school include installing rainwater recharge pits, composting of wet waste and use of bio-compost in school gardens, utilizing drip irrigation, starting a "save the sparrow" campaign to attract and support migratory birds, and planting vegetable and fruit gardens that are donated to nearby communities. These activities help raise student awareness and cultivate environmental values in the students, teachers and the community.





3000 plants
on the school campus helps
reduce heat-island effect

100 Teachers and **2000** Students



**Save the sparrow
initiative**



**Butterfly and
pollinator garden**



**Composting of
organic waste**



**Distribution of
medicinal plants**